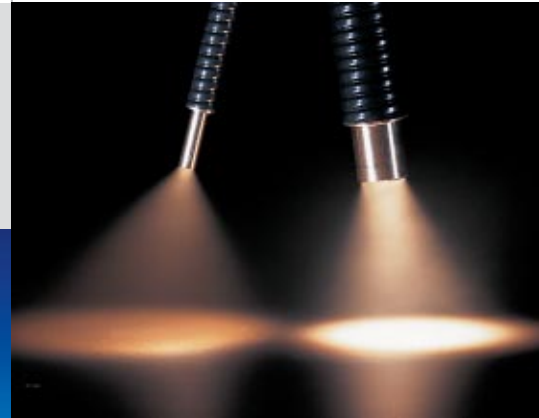


Stereomicroscopy

KL 1500 LCD and KL 2500 LCD Cold Light Sources

Stereomicroscopy needs a lot of light in a narrow space. With normal light sources this would mean a lot of heat, which is very likely to ruin your specimens. Cold light sources ensure intensive specimen illumination with "cold", i.e. infrared-free light. This visible light is conducted right up to the specimen via high-quality fiber-optic light guides.



Specimen-preserving cold light is a standard feature of Carl Zeiss stereomicroscopes. The performance of the **KL 1500 LCD** and **KL 2500 LCD** Cold Light Sources sets new standards for stereomicroscope illumination.

Salient features:

- **LC display of color temperature and operating modes**
- **Continuous electronic and mechanical dimming**
- **Stackability without compromise on function or operating convenience**
- **Easy lamp change – no tools required**

**Light Sources for
Illumination and Contrasting**

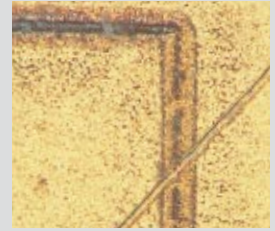


Illuminating and Contrasting Methods

Spotlight

Where the stereomicroscopist needs a lot of light concentrated in a small spot, fiber-optic spot illuminators are the answer.

Fiber-optic light guides, whether slack or of the goose-neck type, have become standard as spot **epi-illuminators** in stereomicroscopy. Their flexibility allows them to be arranged at almost any position and angle relative to the specimen.



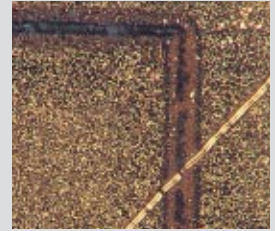
1

With the fiber illuminator set vertically inside the focusing bracket, you can use the **Transillumination Light Box** for brightfield transmitted-light observation, thanks to a two-mirror deflection system.



2

For **coaxial illumination** (only for Stemi SV microscopes), the illumination light is directly coupled into the stereomicroscope's observation beam path. Thus, the size of the light spot automatically adjusts to the specimen field covered. Disturbing reflections are eliminated by an anti-reflection cap.



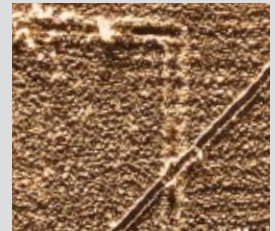
3

Annular light

Annular illuminators provide circular illumination directed toward the center of the specimen, with almost no shadows. Annular slit illuminators allow darkfield observation with either epi- or transillumination.

For **darkfield epi-illumination**, the fibers of the annular illuminator are arranged to cast the light onto the specimen at an angle of 60° rather than vertically.

This way, only the light that is diffracted by the specimen can enter the objective.



4

For all-round **darkfield transmitted light**, a central stop between annular illuminator and specimen obstructs the direct light. Here again, **only** the light that is **diffracted** by the specimen and therefore carries information about it, can enter the objective. Switching from the central stop to an opal glass disk allows you to observe the specimen with brightfield transmitted light.



5

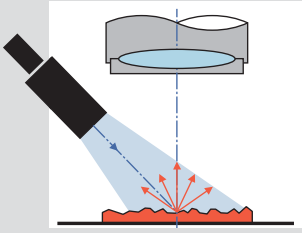
Linear slit light

Epi-illumination of the specimen surface at a very small angle makes structures of extremely low height visible.

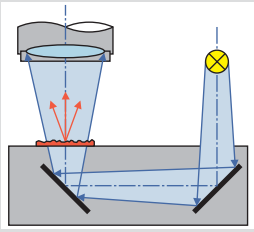
Here, the round cross-section of the fiber bundle is converted into a linear (slit) arrangement. The rays emerging from the linear slit form a carpet of light covering a large specimen area and casting shadows even of the smallest elevations.



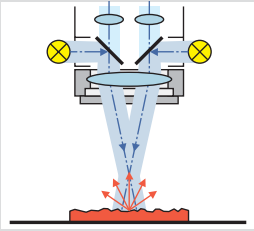
6



Inclined epi-illumination casts shadows at the specimen structures, a prerequisite for three-dimensional images.



Simple configuration for brightfield transmitted-light illumination.



This brightfield illuminator brings out many details of flat, reflecting or polarizing surfaces.

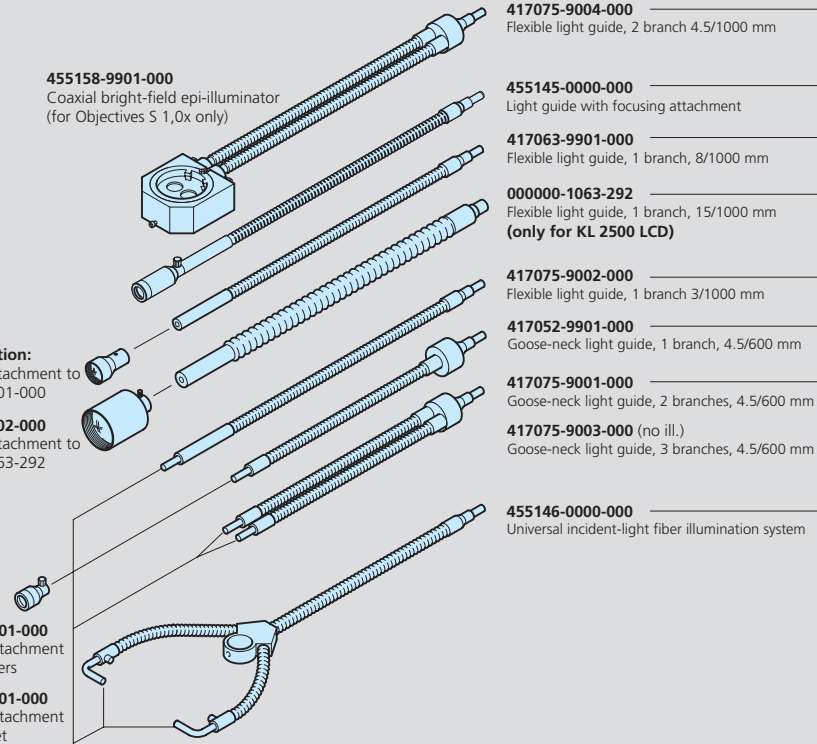
455158-9901-000
Coaxial bright-field epi-illuminator
(for Objectives S 1,0x only)

in preparation:
Focusing attachment to
417063-9901-000

417090-9002-000
Focusing attachment to
000000-1063-292

417059-9901-000
Focusing attachment
without filters

(no ill.) **417060-9901-000**
Focusing attachment
and filter set



417075-9004-000
Flexible light guide, 2 branch 4.5/1000 mm

455145-0000-000
Light guide with focusing attachment

417063-9901-000
Flexible light guide, 1 branch, 8/1000 mm

000000-1063-292
Flexible light guide, 1 branch, 15/1000 mm
(only for KL 2500 LCD)

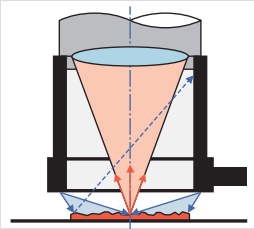
417075-9002-000
Flexible light guide, 1 branch 3/1000 mm

417052-9901-000
Goose-neck light guide, 1 branch, 4.5/600 mm

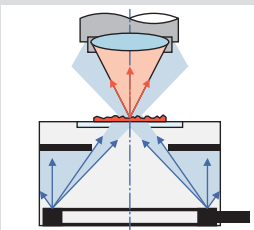
417075-9001-000
Goose-neck light guide, 2 branches, 4.5/600 mm

417075-9003-000 (no ill.)
Goose-neck light guide, 3 branches, 4.5/600 mm

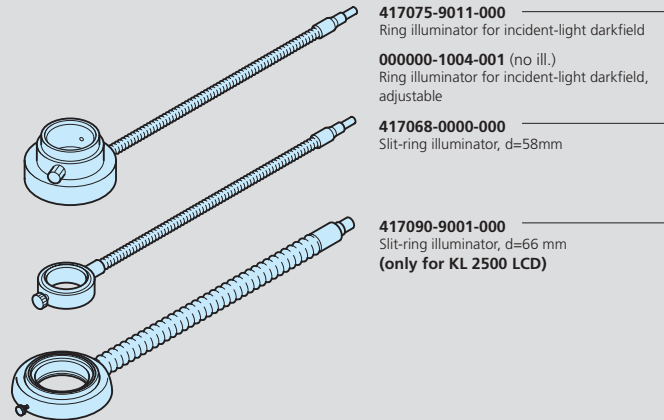
455146-0000-000
Universal incident-light fiber illumination system



For darkfield epi-illumination, the annular illuminator is positioned close to the specimen. It is used together with a sleeve that prevents extraneous light from impairing the contrast.



Especially with transmitted light, omnilateral darkfield reveals finest structures at high contrast.

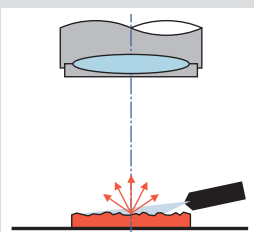


417075-9011-000
Ring illuminator for incident-light darkfield

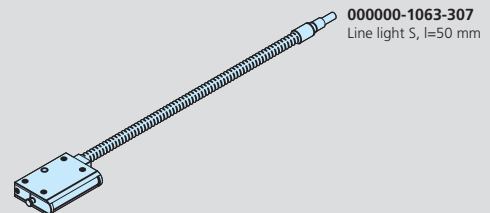
000000-1004-001 (no ill.)
Ring illuminator for incident-light darkfield,
adjustable

417068-0000-000
Slit-ring illuminator, d=58mm

417090-9001-000
Slit-ring illuminator, d=66 mm
(only for KL 2500 LCD)



With incident illumination at an extremely flat angle, added contrast is produced by the high light yield and distinct shadows.



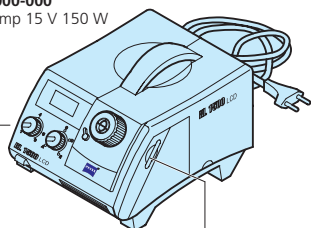
000000-1063-307
Line light S, l=50 mm

A modular range of fiber-optic components permits the illumination to be adapted to the observation task.

000000-1063-181
Cold-light source
KL 1500 LCD (230V)

000000-1063-182 (without illustration)
Cold-light source
KL 1500 LCD (115 V)

417053-0000-000
Halogen lamp 15 V 150 W



000000-1063-301
Filter S, blue

000000-1063-302
Filter S, red

000000-1063-303
Filter S, green

000000-1063-304
Filter S, yellow

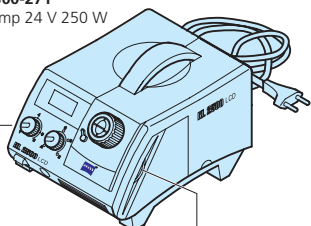
000000-0163-306
Conversion filter S



000000-1063-184 (no ill.)
Cold-light source
KL 2500 LCD (115 V)

000000-1063-183
Cold-light source
KL 2500 LCD (230 V)

000000-0300-271
Halogen lamp 24 V 250 W



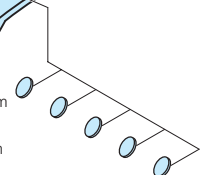
000000-1063-313
Blue filter, d=28 mm

000000-1063-314
Red filter, d=28 mm

000000-1063-315
Green filter, d=28 mm

000000-1063-316
Yellow filter, d=28 mm

000000-1063-317
Conversion filter, d=28 mm



Illustrations on page 2:

- 1 Damaged gold coat, epi-illumination
- 2 Tragopogon blossom, brightfield transmitted light
- 3 Damaged gold coat, coaxial illumination
- 4 Damaged gold coat, darkfield epi-illumination
- 5 Tragopogon blossom, darkfield transmitted light
- 6 Fingerprint, "grayfield" epi-illumination

Features of the Cold-Light Sources



Lamp compartment, permits fast change of the halogen lamp without tool

LC display of color temperature and operating mode

Switch for optimizing the illumination

Sturdy collet for light guides with active fiber diameters
– up to 9 mm (KL1500 LCD)
– up to 15 mm (KL2500 LCD)



Stabilized electronic brightness control

Mechanical brightness control without variation of the light's color temperature

Connection of remote control keypad or RS 232 interface (KL 2500 LCD only)

5-place filter wheel accommodating filters of 28 mm dia. (KL 2500 LCD only)



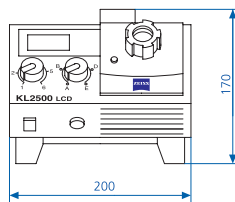
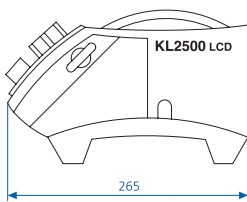
Specification

	KL 1500 LCD	KL 2500 LCD
Weight	4.8 kg	6 kg
Cooling	Low-noise blower	
Stackability	yes	
RS232 interface	no	option
Filter holder	Filter insert S	5-place filter wheel for 28 mm filter dia.

Electrical data		
Operating voltage 115 V	100 V a.c., 50/60 Hz 120 V a.c., 60 Hz	
Operating voltage 230 V	220 V ... 240 V a.c., 50/60 Hz	
Enclosure	Protection class II	
Lamp type	Halogen reflector lamp	
Rated lamp voltage	15 V	24 V
Rated lamp power	150 W	250 W
Mean lamp life Step 4	1500 h	
Step 5	150 h	

Light data		
Luminous flux (Step 6)	600 lm	1300 lm
Brightness control	Electronic and mechanical	
Active fiber bundle dia.	max. 9 mm	max. 15 mm

Product certification	
115 V version	c CSA / UL
230 V version	VDE / EMC (complies with basic requirements of Annex I to Medical Products Directive 93/42/EEC)



Allied High Tech Products Inc.
2376 E. Pacifica Place
Rancho Dominguez, CA 90220
(800) 675-1118 (US/Canada)
(310) 635-2466 (Worldwide)
www.alliedhightech.com